

5

4

3

2

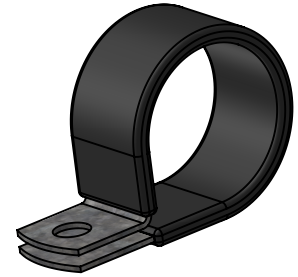
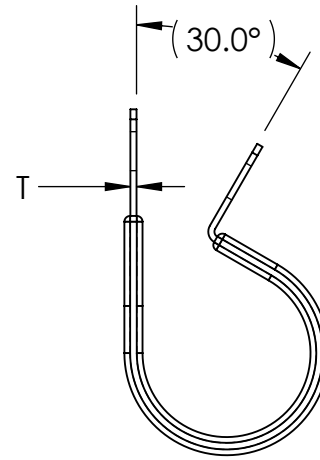
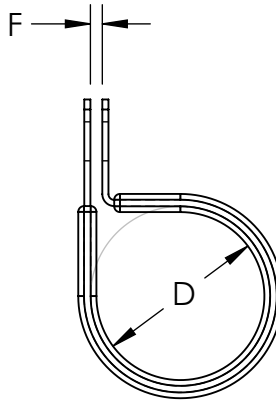
1

Material and Finish Codes

Z1 - CS, HD Galvanized, Chem Treated G90
Z2 - CS, .0003 min Zinc, Clear

REVISIONS			
REV.	DESCRIPTION	DATE	APPROVED
1	Update Z2 Suffix to .0003 min.	11/17/2020	C. Goettl
2	Redrawn for Center to Center Dimension	6/23/2022	C. Goettl

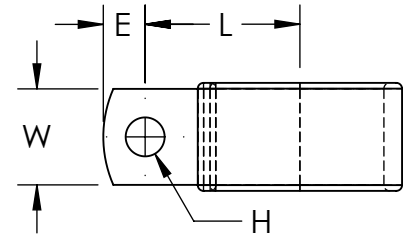
Clamping Diameter (D)	Center to Center (L)
$\frac{aa-1}{16}$	$\frac{aa}{32} + \frac{H}{2} + .235$
± .015	± .031



As Supplied
(Open Position)

bb	Hole Diameter (H)	Hole Center to End (E)	Width (W)	Gap (F)	Material Thickness (T)
05	.172	.187	.375	.062	.032
07	.203	.218	.500		
	± .005	± .015	± .010	± .031	

Note: CWV clamps have circular holes on the top and bottom sides with diameter H

**EXPLANATION OF PART CALLOUT**

CWV - aa bb mf

MATERIAL AND FINISH CODE
SECONDARY DIMENSIONS CODE
CLAMPING DIAMETER CODE
PART SERIES

EXAMPLE OF PART CALLOUT

CWV - 16 07 Z1

This part number indicates the clamp will have dimensions:
Clamping Diameter (D) = 0.937
Hole Diameter (H) = .203
Center to Center (L) = 0.837
Width (W) = .500
Hole Center To End (E) = .218

Made from CS, Hot Dipped Galvanized,
Chem Treated G90
Coated in Black Vinyl, 1/32" Thick

KMCTM

THE ORIGINAL CLIP & CLAMP CO.
1221 SOUTH PARK STREET
PORT WASHINGTON, WI 53074
(262) 377-5030

PROPRIETARY AND CONFIDENTIAL

THE INFORMATION CONTAINED IN THIS DRAWING IS THE SOLE PROPERTY OF KICKHAEFER MANUFACTURING COMPANY. ANY REPRODUCTION IN PART OR AS A WHOLE WITHOUT THE WRITTEN PERMISSION OF KICKHAEFER MANUFACTURING COMPANY IS PROHIBITED.

PART SERIES
MASTER PRINT

CWV

WIRING AND TUBE
CLAMPS

DRAWN CHECKED

BC KW

8/22/17 9/11/18

NOT TO SCALE REV 2

5

4

3

2

1

A

A