

5

4

3

2

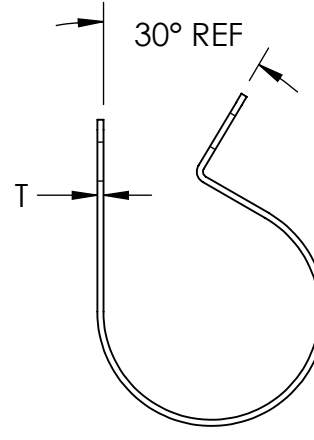
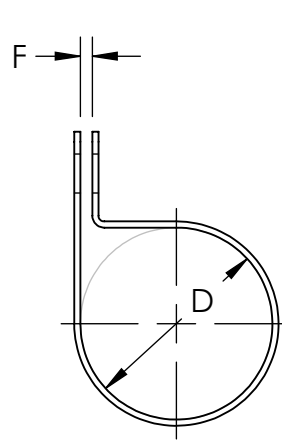
1

**Material and Finish Codes**

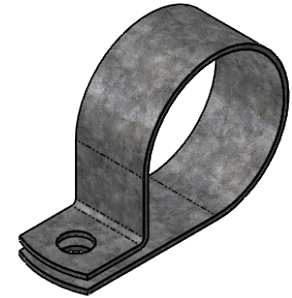
Z1 - CS, HD Galvanized, Chem Treated G90  
 Z2 - CS, .0003 min Zinc, Clear

REVISIONS			
REV.	DESCRIPTION	DATE	APPROVED
1	Update Z2 Suffix to .0003 min.	11/17/2020	C. Goettl

Clamping Diameter (D)	Center to Center (L)
aa 16	aa + bb + 2 32
± .015	± .031



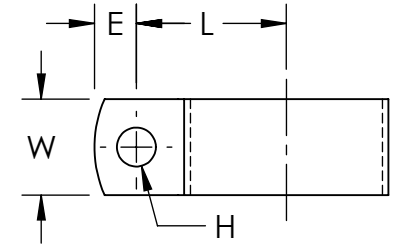
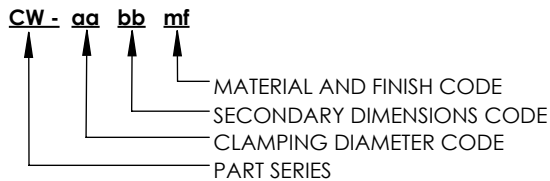
As Supplied  
(Open Position)



There are two exceptions to the rule for determining L. CW-0205 has an L = .297 and CW-0207 has an L = .375

bb	Hole Diameter (H)	Hole Center to End (E)	Width (W)	Gap (F)	Material Thickness (T)
05	.172	.187	.375	.062	.032
07	.203	.218	.500		
	± .005	± .015	± .010	± .031	

Note: CW clamps have circular holes on the top and bottom sides with diameter H

**EXPLANATION OF PART CALLOUT****EXAMPLE OF PART CALLOUT**

**CW - 16 07 Z1**

This part number indicates the clamp will have dimensions:  
 Clamping Diameter (D) = 1.000  
 Hole Diameter (H) = .203  
 Center to Center (L) = .781  
 Width (W) = .500  
 Hole Center To End (E) = .218

Made from CS, Hot Dipped Galvanized,  
 Chem Treated G90

**KMC**<sup>TM</sup>

THE ORIGINAL CLIP & CLAMP CO.  
 1221 SOUTH PARK STREET  
 PORT WASHINGTON, WI 53074  
 (262) 377-5030

**PROPRIETARY AND CONFIDENTIAL**

THE INFORMATION CONTAINED IN THIS DRAWING IS THE SOLE PROPERTY OF KICKHAEFER MANUFACTURING COMPANY. ANY REPRODUCTION IN PART OR AS A WHOLE WITHOUT THE WRITTEN PERMISSION OF KICKHAEFER MANUFACTURING COMPANY IS PROHIBITED.

PART SERIES  
 MASTER PRINT

**CW**

WIRING AND TUBE  
 CLAMPS

DRAWN CHECKED

BC KW

8/22/17 9/11/18

NOT TO SCALE REV 1

5

4

3

2

1

A

A