

5

4

3

2

1

Material and Finish Codes

Z1 - CS, HD Galvanized, Chem Treated G90 EPDM per SAE J200/ASTM BC715A14C12E034
 SS - Stainless Steel, Per ASTM A240/A666 or
 AL - 5052 H34 per ASTM B209 Silicone per AMS3304, SAE J200/ASTM D2000 M2GE706

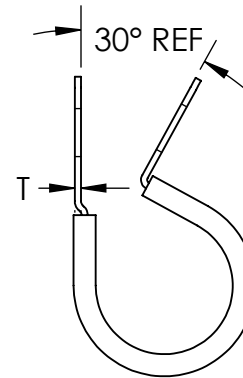
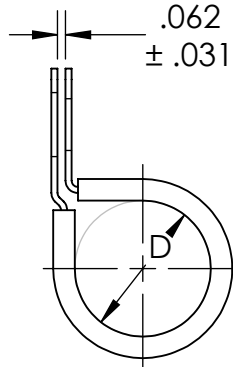
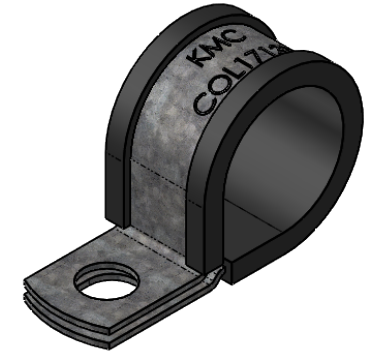
Cushion

REVISIONS

REV.	DESCRIPTION	DATE	APPROVED
1	Added Aluminum to chart	12/15/2020	C. Goettl

Center to Center (L)

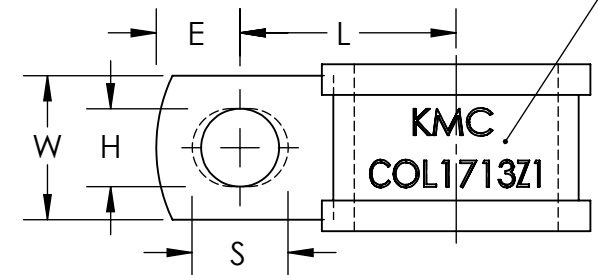
aa from 03 to 05		aa from 06 to 08	aa from 09 to 31	aa from 32 to 64
COL-0309	.854	aa + bb + 3 32	aa + bb + 6 32	aa + bb + 7 32
COL-0311	.791			
COL-0313	.729			
COL-0407	.711			
COL-0409	.674			
COL-0411	.611			
COL-0413	.656			
COL-0415	.718			
COL-0417	.781			
COL-0507	.569			
COL-0509	.562			
COL-0511	.625			
COL-0513	.687			
COL-0515	.750			
COL-0517	.812			
± .031				

As Supplied
(Open Position)

Note: COL clamps have a circular hole with diameter H on the top side and a slotted hole with H width, and length S, on the bottom side.

KMC and Part Number
Stamped in Metal

	Hole Diameter (H)	Hole Center to End (E)	Slot Length (S)	Width (W)	HD Galvanized Thickness (T)			Stainless & Aluminum Thickness (T)	
					aa from 03 to 06	aa from 07 to 64	aa from 17 to 64	aa from 03 to 16	aa from 17 to 64
07	.203	.250	.297	.500	.032	.032	N/A	N/A	N/A
09	.281	.312	.375						
11	.343	.375	.437	.750		.048	.048	.032	.048
13	.406	.437	.500						
15	.468	.500	.562						
17	.531	.562	.625	1.000					
	± .005	± .015	± .020	± .010		± .002		± .002	

**EXPLANATION OF PART CALLOUT**

COL - aa bb mf

↑ MATERIAL AND FINISH CODE
 ↑ SECONDARY DIMENSIONS CODE
 ↑ CLAMPING DIAMETER CODE
 ↑ PART SERIES

EXAMPLE OF PART CALLOUT

COL - 17 13 Z1

This part number indicates the clamp will have dimensions:

Clamping Diameter (D) = 1.062
 Center to Center (L) = 1.125
 Hole Center to End (E) = .437
 Slot Length (S) = .500
 Hole Diameter (H) = .406
 Width (W) = .750
 Material Thickness (G) = .048

Made from CS, Hot Dipped Galvanized,
 Chem Treated G90

THE ORIGINAL CLIP & CLAMP CO.

1221 SOUTH PARK STREET
 PORT WASHINGTON, WI 53074
 (262) 377-5030

PROPRIETARY AND CONFIDENTIAL

THE INFORMATION CONTAINED IN THIS DRAWING IS THE SOLE PROPERTY OF KICKHAEFER MANUFACTURING COMPANY. ANY REPRODUCTION IN PART OR AS A WHOLE WITHOUT THE WRITTEN PERMISSION OF KICKHAEFER MANUFACTURING COMPANY IS PROHIBITED.

PART SERIES
MASTER PRINT**COL**WIRING AND TUBE
CLAMPS, WITH LINER

DRAWN CHECKED

BC KW

8/22/17 9/11/18

NOT TO SCALE

5

4

3

2

1

D

D

C

C

B

B

A

A