

5

4

3

2

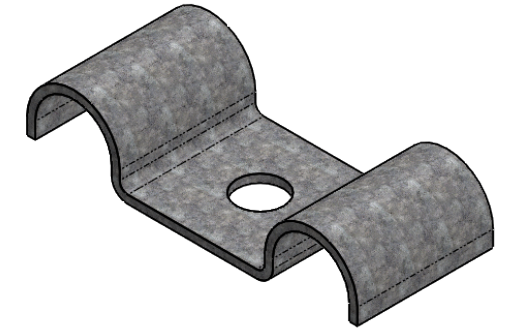
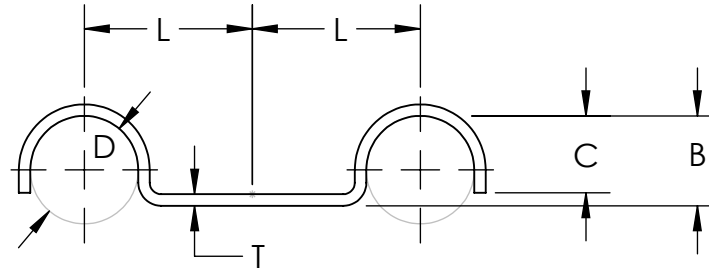
1

REVISIONS

REV.	DESCRIPTION	DATE	APPROVED
1	removed eight size and finish options	12/14/2020	C. Goettl

Material and Finish Codes

Z1 - CS, HD Galvanized, Chem Treated G90
Z2 - CS, .0002 min Zinc, Clear



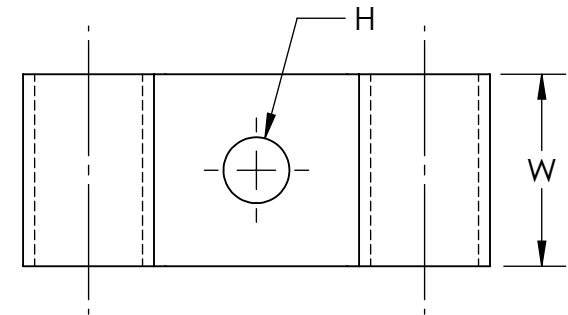
D

D

C

C

Part Number	Clamping Diameter (D)	Center to Center (L)	Width (W)	Hole Diameter (H)	Base to Top of Radius (B)	Closure (C)	Material Thickness (T)	
CM-0709	.437	.687	.750	.281	.375	.343	.048	
CM-0711				.343				
CM-0809	.500	.812		.281	.437	.250		
CM-0811				.343				
CM-0909	.562	.875		.281	.468	.400		
CM-0911				.343				
CM-1009	.625	.625	.281	.625	.500	.060		
CM-1011			.343					
CM-1109	.687	.625	1.000	.281	.437		.090**	
CM-1209*	.750	.875	.750	.343	.718			.500
CM-1211*				.406				
CM-1213*				.343				
CM-1311*	.812	1.250	1.000	.406	.406	.406		
CM-1313*				.406				
CM-1409*	.875	.906	.750	.281	.843	.687		
CM-1413*				.406				
CM-1609*	1.000	1.062	1.000	.281	.906	.750	.120	
CM-1713*	1.062	1.156		.406	.968	.968		
	± .015	± .031	± .010	± .005	± .015	REF.	± .002	



B

B

A

A

*Parts only available in Z2 **Material Thickness tolerance of ± .004

KMCTM

THE ORIGINAL CLIP & CLAMP CO.

1221 SOUTH PARK STREET
PORT WASHINGTON, WI 53074
(262) 377-5030

PROPRIETARY AND CONFIDENTIAL

THE INFORMATION CONTAINED IN THIS DRAWING IS THE SOLE PROPERTY OF KICKHAEFER MANUFACTURING COMPANY. ANY REPRODUCTION IN PART OR AS A WHOLE WITHOUT THE WRITTEN PERMISSION OF KICKHAEFER MANUFACTURING COMPANY IS PROHIBITED.

PART SERIES
MASTER PRINT

CM

DOUBLE PIPE CLAMPS

DRAWN

CHECKED

BC

KW

8/22/17

9/11/18

NOT TO SCALE

5

4

3

2

1