

5

4

3

2

1

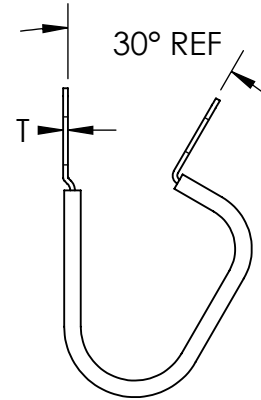
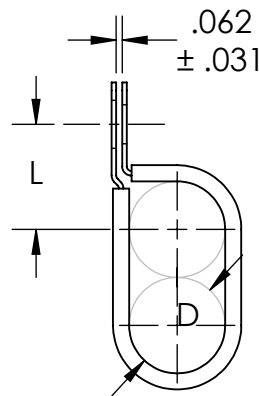
**Material and Finish Codes**

Z1 - CS, HD Galvanized, Chem Treated G90  
 SS - Stainless Steel, Per ASTM A240/A666

**Cushion**

EPDM per SAE J200/ASTM BC715A14C12E034  
 or  
 Silicone per AMS3304, SAE J200/ASTM D2000 M2GE706

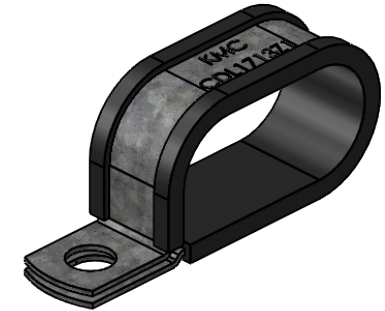
Clamping Diameter (D)	Center to Center (L)
$\frac{aa}{16}$	$\frac{aa + bb + 6}{32}$
± .031	± .031



As Supplied  
(Open Position)

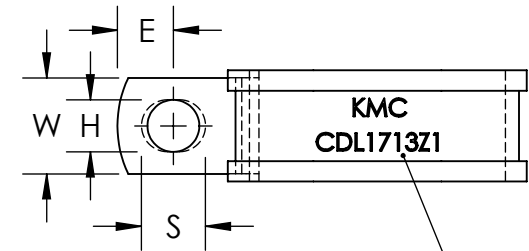
## REVISIONS

REV.	DESCRIPTION	DATE	APPROVED
1	removed width options 07, 15, and 17	12/14/2020	C. Goettl

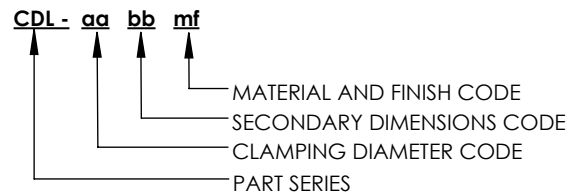


Note: CDL clamps have a circular hole with diameter H on the top side and a slotted hole with H width, and length S, on the bottom side.

bb	Hole Diameter (H)	Hole Center to End (E)	Width (W)	Slot Length (S)	HD Galv Thickness (T)			Stainless Thickness (T)	
					aa from 04 to 07	aa from 08 to 16	aa from 17 to 24	aa from 04 to 07	aa from 08 to 24
09	.281	.312	.500	.375	.032	.048	.032	.048	
11	.343	.375	.625	.437					
13	.406	.437	.750	.500					
	± .005	± .015	± .010	± .020	± .002		± .002		



KMC and Part Number  
Stamped in Metal

**EXPLANATION OF PART CALLOUT****EXAMPLE OF PART CALLOUT****CDL - 17 13 Z1**

This part number indicates the clamp will have dimensions:  
 Clamping Diameter (D) = 1.062  
 Hole Diameter (H) = .406  
 Center to Center (L) = 1.125  
 Width (W) = .750  
 Hole Center to End (E) = .437  
 Material Thickness (G) = .048  
 Slot Length (S) = .500

Made from CS, Hot Dipped Galvanized,  
 Chem Treated G90

**KMC**<sup>™</sup>

THE ORIGINAL CLIP & CLAMP CO.

1221 SOUTH PARK STREET  
 PORT WASHINGTON, WI 53074  
 (262) 377-5030

**PROPRIETARY AND CONFIDENTIAL**

THE INFORMATION CONTAINED IN THIS DRAWING IS THE SOLE PROPERTY OF KICKHAEFER MANUFACTURING COMPANY. ANY REPRODUCTION IN PART OR AS A WHOLE WITHOUT THE WRITTEN PERMISSION OF KICKHAEFER MANUFACTURING COMPANY IS PROHIBITED.

PART SERIES  
MASTER PRINT

**CDL**

DOUBLE TUBE CLAMPS,  
WITH LINER

DRAWN CHECKED

BC KW

8/22/17 9/11/18

NOT TO SCALE

5

4

3

2

1

A

A

C

C

D

D