

5

4

3

2

1

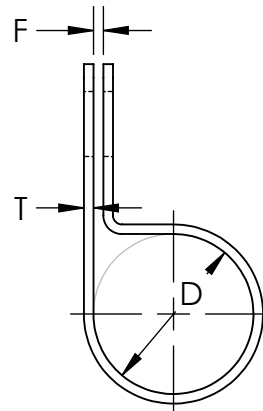
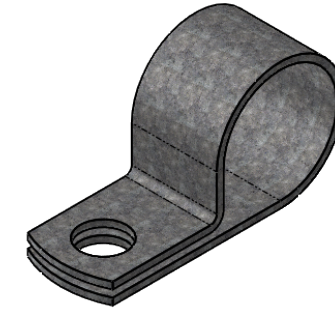
Material and Finish Codes

Z1 - CS, HD Galvanized, Chem Treated G90

REVISIONS

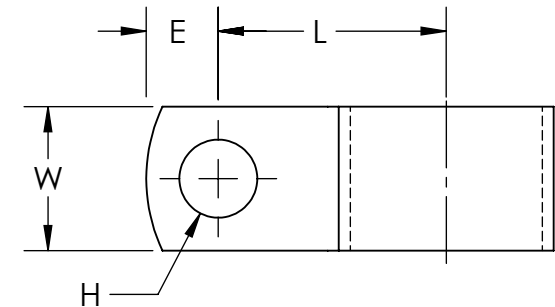
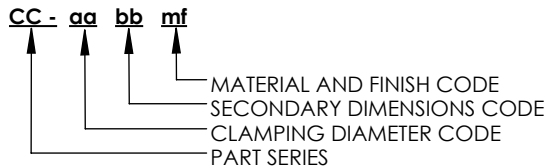
| REV. | DESCRIPTION | DATE | APPROVED |
|------|--------------------------|------------|-----------|
| 1 | removed Z2 finish option | 12/10/2020 | C. Goettl |

| Clamping Diameter (D) | Center to Center (L) |
|-----------------------|----------------------|
| $\frac{aa}{16}$ | See KMC Catalog |
| $\pm .015$ | $\pm .031$ |

As Supplied
(Closed Position)

Note: CC clamps have circular holes on the top and bottom sides with diameter H

| bb | Hole Diameter (H) | Hole Center to End (E) | Width (W) | | | Gap (F) | | | Material Thickness (T) | | |
|----|-------------------|------------------------|------------------|------------------|------------------|------------------|------------------|------------------|------------------------|------------------|------------------|
| | | | aa from 05 to 07 | aa from 08 to 15 | aa from 16 to 33 | aa from 05 to 17 | aa from 18 to 24 | aa from 25 to 33 | aa from 05 to 06 | aa from 07 to 11 | aa from 12 to 33 |
| 09 | .281 | .250 | .625 | .625 | .625 | .062 | .093 | .125 | .032 | .048 | .060 |
| 11 | .343 | .312 | | | .750 | | | | | | |
| 13 | .406 | .375 | .750 | .750 | .062 | .093 | .125 | .032 | .048 | .060 | |
| 15 | .468 | .437 | | .875 | | | | | | | |
| 17 | .531 | .500 | .875 | 1.000 | 1.000 | .062 | .093 | .125 | .032 | .048 | .060 |
| | $\pm .005$ | $\pm .015$ | $\pm .010$ | | $\pm .031$ | | | | | | |

**EXPLANATION OF PART CALLOUT****EXAMPLE OF PART CALLOUT****CC - 16 13 Z1**

This part number indicates the clamp will have dimensions:
Clamping Diameter (D) = 1.000
Hole Diameter (H) = .406
Center to Center (L) = 1.187
Width (W) = .750
Hole Center to End (E) = .375
Gap (F) = .032
Material Thickness (G) = .060

Made from CS, Hot Dipped Galvanized,
Chem Treated G90

KMC

THE ORIGINAL CLIP & CLAMP CO.

1221 SOUTH PARK STREET
PORT WASHINGTON, WI 53074
(262) 377-5030

PROPRIETARY AND CONFIDENTIAL

THE INFORMATION CONTAINED IN THIS DRAWING IS THE SOLE PROPERTY OF KICKHAEFER MANUFACTURING COMPANY. ANY REPRODUCTION IN PART OR AS A WHOLE WITHOUT THE WRITTEN PERMISSION OF KICKHAEFER MANUFACTURING COMPANY IS PROHIBITED.

PART SERIES
MASTER PRINT**CC**

TUBE CLAMPS

DRAWN CHECKED

BC

KW

8/22/17

9/11/18

NOT TO SCALE

5

4

3

2

1

A

A