

5

4

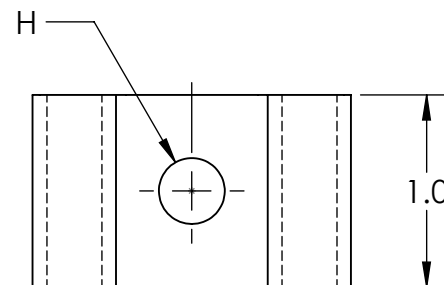
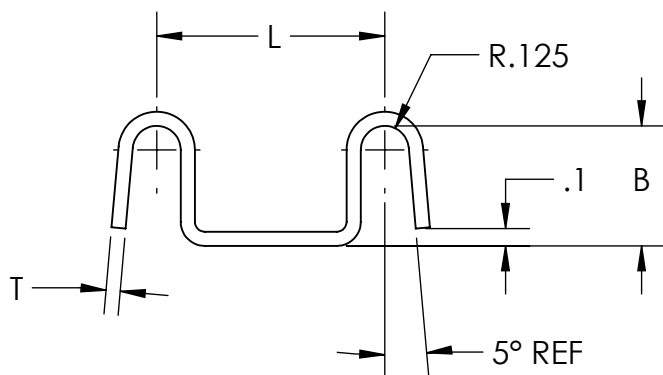
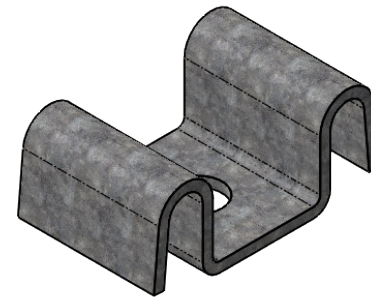
3

2

1

Material and Finish Codes

H1 - HRPO Steel, HD Galvanized per ASTM 153



Part Number	Material Thickness (T)	Center to Center (L)	Hole Diameter (H)**	Base to Top of Radius (B)
SC-2074	.074 ± .003	.937	.312	.500
SC-1074	.074 ± .003	1.188	.343	.625
SC-1104	.104 ± .004	1.188	.343	.625
		± .030	**	± .060

** Bolt holes may be distorted by forming, but ϕ .281 pin will pass through ϕ .312 hole, and ϕ .328 pin will pass through ϕ .343 hole.

KMC™

THE ORIGINAL CLIP & CLAMP CO.

 1221 SOUTH PARK STREET
 PORT WASHINGTON, WI 53074
 (262) 377-5030

PROPRIETARY AND CONFIDENTIAL

THE INFORMATION CONTAINED IN THIS DRAWING IS THE SOLE PROPERTY OF KICKHAEFER MANUFACTURING COMPANY. ANY REPRODUCTION IN PART OR AS A WHOLE WITHOUT THE WRITTEN PERMISSION OF KICKHAEFER MANUFACTURING COMPANY IS PROHIBITED.

 PART SERIES
 MASTER PRINT

SC

SADDLE CLIPS

DRAWN

CHECKED

BC

KW

8/22/17

9/11/18

NOT TO SCALE

5

4

3

2

1

A

A

B

B

C

C

D

D