

5

4

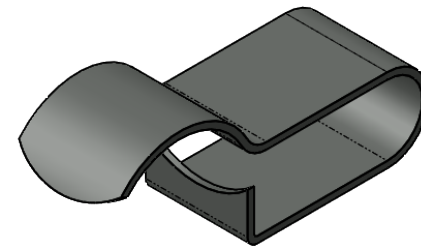
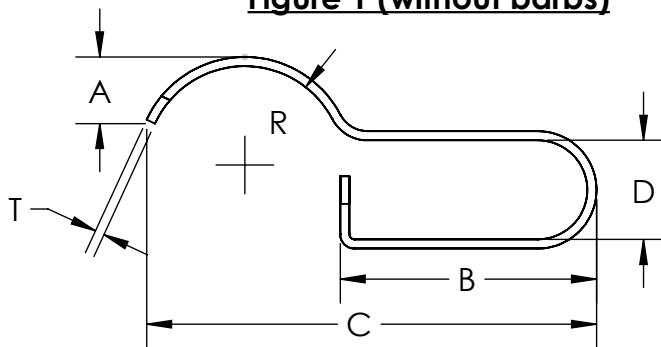
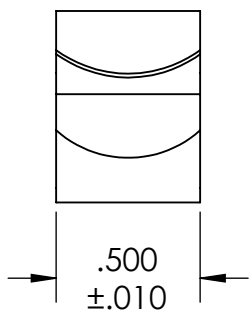
3

2

1

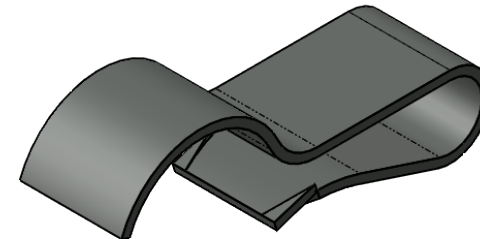
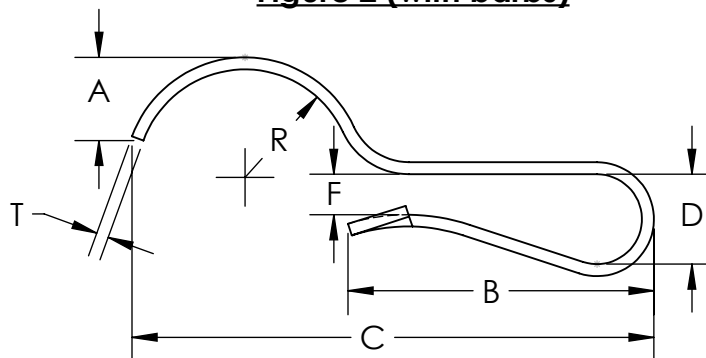
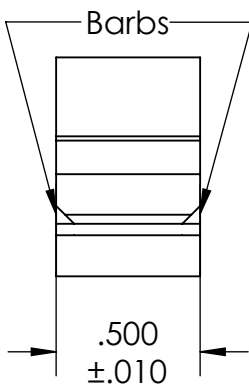
D

D

Figure 1 (without barbs)

C

C

Figure 2 (with barbs)

B

B

Material and Finish Codes

H7 - C1050 Annealed Spring Steel, Heat Treated to Blue Spring Temper
with .00015 Min. Zinc Trivalent Black Chromate finish

A

A

| Part Number | Figure | Clamp Radius (R) | Clamp Height (A) | Spring Length (B) | Overall Length (C) | Spring Diameter (D) | Spring Gap (F) | Material Thickness (T) | Use on Metal Thickness |
|-------------|--------|------------------|------------------|-------------------|--------------------|---------------------|----------------|------------------------|------------------------|
| FC-1032 | 1 | .250 | .187 | .703 | 1.062 | .156 | .046 | .032 | .074 .156 |
| FC-2032 | 1 | .375 | .250 | .937 | 1.625 | .186 | .062 | .032 | .120 .175 |
| FC-3032 | 1 | .375 | .218 | .890 | 1.562 | .344 | .125 | .032 | .175 .312 |
| FC-4042 | 2 | .312 | .250 | 1.000 | 1.531 | .187 | .100 | .042 | .074 .187 |
| FC-5042 | 2 | .375 | .406 | 1.062 | 1.812 | .312 | .141 | .042 | .134 .312 |
| | | ±.031 | ±.031 | ±.031 | ±.062 | ±.031 | ±.020 | ±.015 | Min Max |

KMCTM

THE ORIGINAL CLIP & CLAMP CO.

1221 SOUTH PARK STREET
PORT WASHINGTON, WI 53074
(262) 377-5030

PROPRIETARY AND CONFIDENTIAL

THE INFORMATION CONTAINED IN THIS DRAWING IS THE SOLE PROPERTY OF KICKHAEFER MANUFACTURING COMPANY. ANY REPRODUCTION IN PART OR AS A WHOLE WITHOUT THE WRITTEN PERMISSION OF KICKHAEFER MANUFACTURING COMPANY IS PROHIBITED.

PART SERIES
MASTER PRINT

FC

FRAME CLIPS

DRAWN

CHECKED

BC

KW

7/19/18

9/11/18

NOT TO SCALE

5

4

3

2

1