

5

4

3

2

1

D

D

C

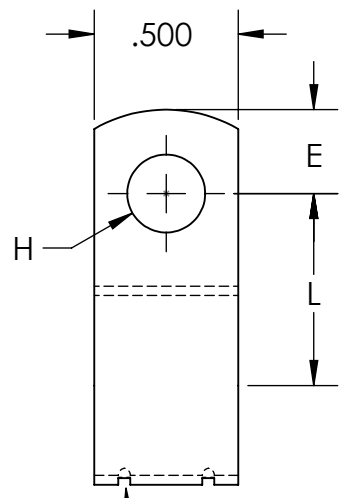
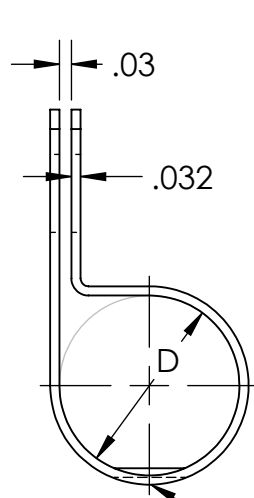
C

B

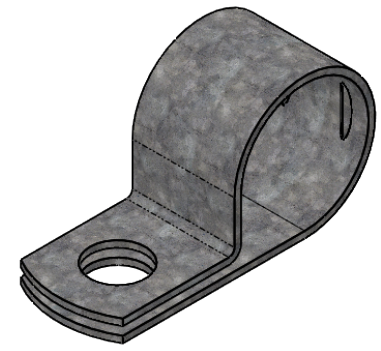
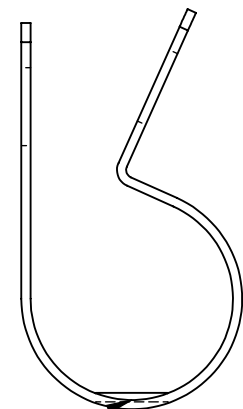
B

A

A



As Supplied (Open Position)



Note: CE clamps have circular holes on the top and bottom sides with diameter H

Dimples

**Material and Finish Codes**

Z1 - CS, HD Galvanized, Chem Treated, G90

Part Number	Center to Center (L)	Cable Diameter (D)	Diameter of Holes (H)	Hole Center to End (E)
CE-0613	.375	3/16	.203	.218
CE-0618	.375	3/16	.281	.250
CE-0713	.375	7/32	.203	.218
CE-0718	.375	7/32	.281	.250
CE-0813	.437	1/4	.203	.218
CE-0818	.437	1/4	.281	.250
	± .031		± .005	± .015



THE ORIGINAL CLIP & CLAMP CO.  
 1221 SOUTH PARK STREET  
 PORT WASHINGTON, WI 53074  
 (262) 377-5030

**PROPRIETARY AND CONFIDENTIAL**  
 THE INFORMATION CONTAINED IN THIS DRAWING IS THE SOLE PROPERTY OF KICKHAEFER MANUFACTURING COMPANY. ANY REPRODUCTION IN PART OR AS A WHOLE WITHOUT THE WRITTEN PERMISSION OF KICKHAEFER MANUFACTURING COMPANY IS PROHIBITED.

PART SERIES MASTER PRINT

**CE**

ENGINE AND DECK MOUNT

DRAWN	CHECKED
-------	---------

BC	KW
----	----

8/22/17	9/11/18
---------	---------

NOT TO SCALE

5

4

3

2

1