

5

4

3

2

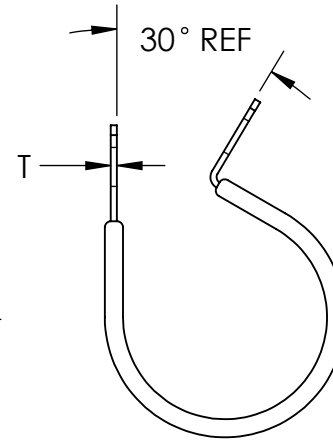
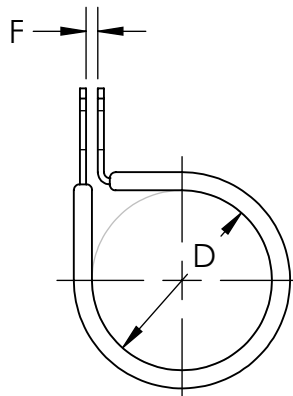
1

**Material and Finish Codes**

Z1 - CS, HD Galvanized, Chem Treated G90  
 Z2 - CS, .0002 min Zinc, Clear

Coated in Black Vinyl, 1/32" Thick

Clamping Diameter (D)	Center to Center (L)
$\frac{aa - 1}{16}$	$\frac{aa + bb + 2}{32}$
± .031	± .031



D

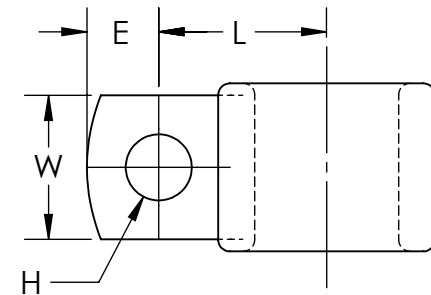
D

C

C

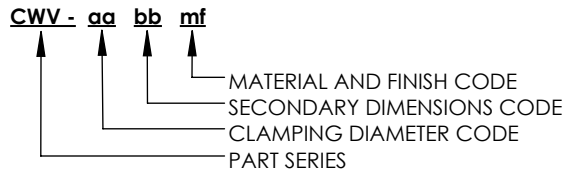
bb	Hole Diameter (H)	Hole Center to End (E)	Width (W)	Gap (F)	Material Thickness (T)
05	.172	.187	.375	.062	.032
07	.203	.218	.500		
	± .005	± .015	± .010	± .031	

Note: CWV clamps have circular holes on the top and bottom sides with diameter H



B

B

**EXPLANATION OF PART CALLOUT**

A

**EXAMPLE OF PART CALLOUT****CWV - 16 07 Z1**

This part number indicates the clamp will have dimensions:  
 Clamping Diameter (D) = 1.000  
 Hole Diameter (H) = .203  
 Center to Center (L) = .781  
 Width (W) = .500  
 Hole Center To End (E) = .218

Made from Hot Dipped Galvanized Steel  
 Chem Treated G90  
 Coated in Black Vinyl, 1/32" Thick

**KMC**

THE ORIGINAL CLIP & CLAMP CO.

1221 SOUTH PARK STREET  
 PORT WASHINGTON, WI 53074  
 (262) 377-5030

**PROPRIETARY AND CONFIDENTIAL**

THE INFORMATION CONTAINED IN THIS DRAWING IS THE SOLE PROPERTY OF KICKHAEFER MANUFACTURING COMPANY. ANY REPRODUCTION IN PART OR AS A WHOLE WITHOUT THE WRITTEN PERMISSION OF KICKHAEFER MANUFACTURING COMPANY IS PROHIBITED.

PART SERIES  
 MASTER PRINT

**CWV**

WIRING AND TUBE  
 CLAMPS

DRAWN

CHECKED

BC

KW

8/22/17

9/11/18

NOT TO SCALE

A

5

4

3

2

1